

CCTV Analógico / HD 4n1 / Cameras

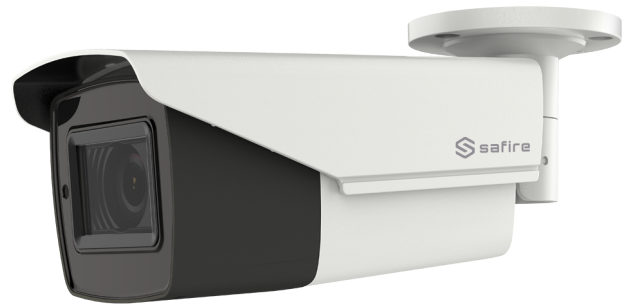
SF-CV788UZW-Q4N1

Ultra Low Light IR Solution 4N1 Camera

Ultra Low Light High Resolution ULTRA Series

Ultra Low Light 0.003Lux high sensitivity sensors, to obtain excellent performance in low light situations that use IR illumination. High level of detail and definition in 5Mpx for demanding installations. 130 dB Advanced Wide Dynamic Range (WDR) solves any situation of backlight or high light contrast.

- 5 Megapíxel Resolution
- Ultra Low Light CMOS Sensor
- 2.7~13.5 mm (5X) Motorized Lens Autofocus
- Smart IR Up to 80 m
- WDR | 3D DNR Advanced funtions
- IP67 Weatherproof



Technical Specification

| | |
|---------------------------------|--|
| Image Sensor | 5 megapixel progressive scan CMOS |
| Max. Resolution | 2560 (H) × 1944 (V) |
| Min. Illumination | Color: 0.003 Lux @ (F1.2, AGC ON), 0 Lux with IR |
| Shutter Time | PAL: 1/25 s to 1/50, 000 s, NTSC: 1/30 s to 1/50, 000 s |
| Day & Night | IR cut filter |
| Angle Adjustment | Pan: 0° to 360°; Tilt: 0° to 90°; Rotate: 0° to 360° |
| Signal System | PAL/NTSC |
| Lens Type | 2.7 mm to 13.5 mm motorized varifocal lens |
| Focal Length & FOV | 92.3° to 29.3° |
| Lens Mount | □ 14 |
| Image Settings | Brightness, Sharpness, 3D DNR, Mirror, Smart IR |
| Frame Rate | TVI: 2 MP@25fps, 2 MP@30fps, 4 MP@25fps, 4 MP@30fps, 5 MP@20fps, AHD: 4 MP@25fps, 4 MP@30fps, 5 MP@20fps, CVI: 4 MP@25fps, 4 MP@30fps, CVBS: PAL, NTSC |
| Day/Night Mode | Auto/Color/BW (Black and White) |
| Wide Dynamic Range (WDR) | ≥ 130 dB |
| Image Enhancement | BLC |
| Privacy Mask | 4 programmable privacy masks |
| Noise Reduction | Level 1 to 9 |
| White Balance | Auto/Manual |
| AGC | Yes |
| Video Output | Switchable TVI/AHD/CVI/CVBS |
| Motion Detection | 4 programmable areas |
| Material | Metal |
| Dimension | 84.5 mm × 92 mm × 255.1 mm (3.33" × 3.62" × 10") Approx. 900 g (1.98 lb.) |
| Operating Condition | -40 °C to 60 °C (-40 °F to 140 °F), humidity: 90% or less (non-condensing) |
| Communication | Up the coax, Protocol: Safire-C (TVI output) |
| Language | English |
| Power Supply | 12 VDC |
| Consumption | Max. 9 W |
| IR Range | Up to 80 m |
| Protection | IP67 |